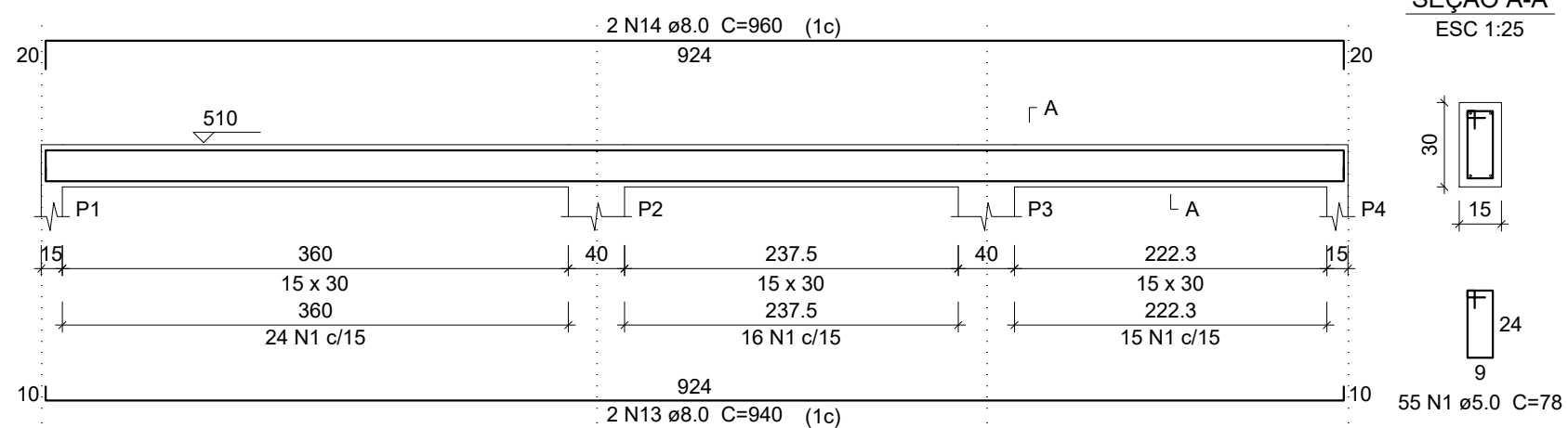
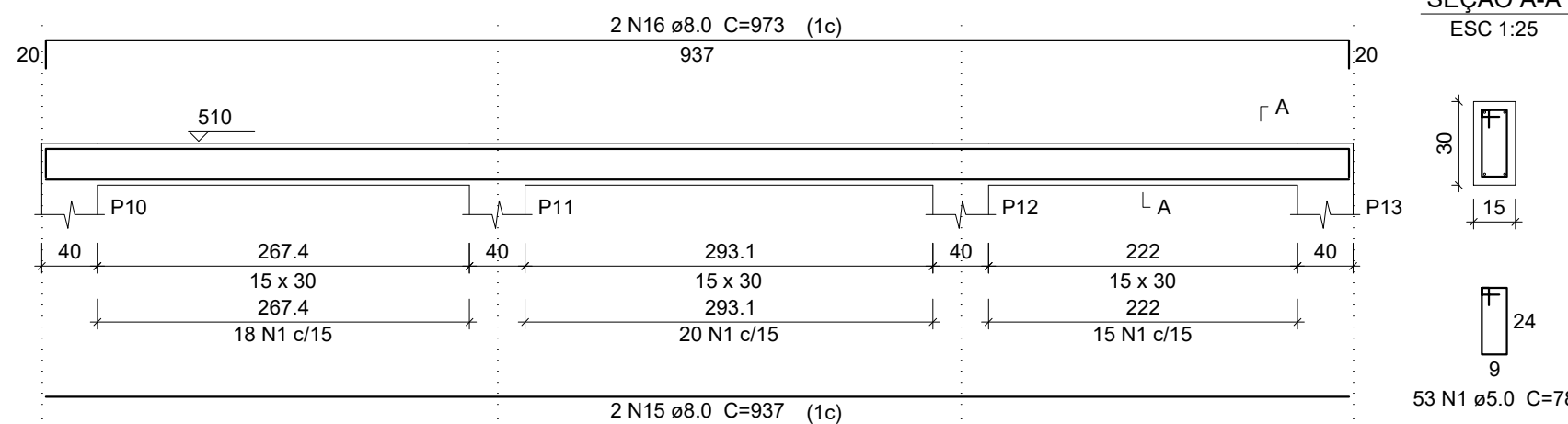


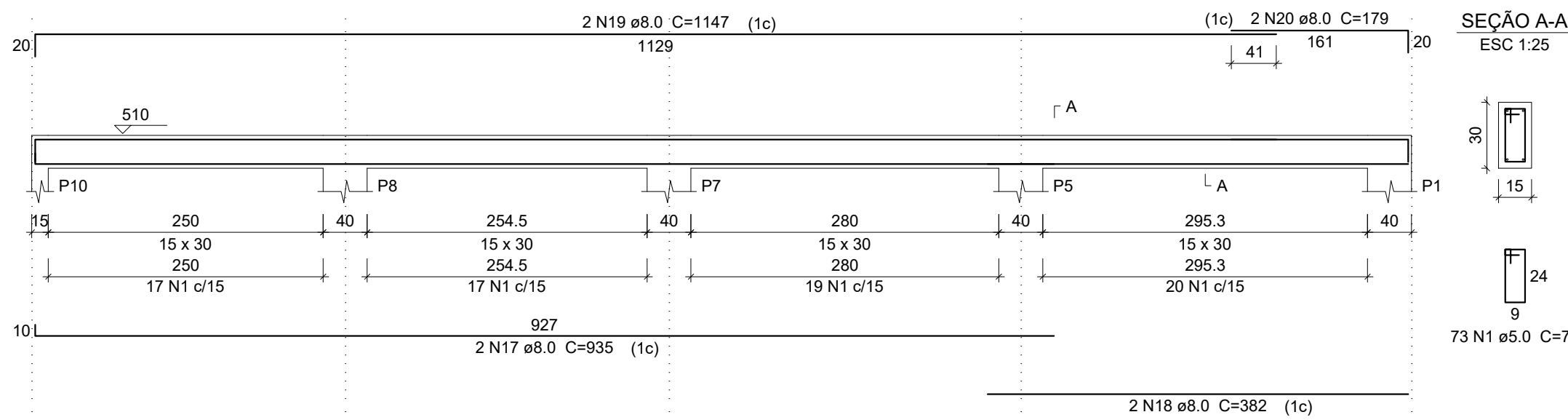
V1
ESC 1:50



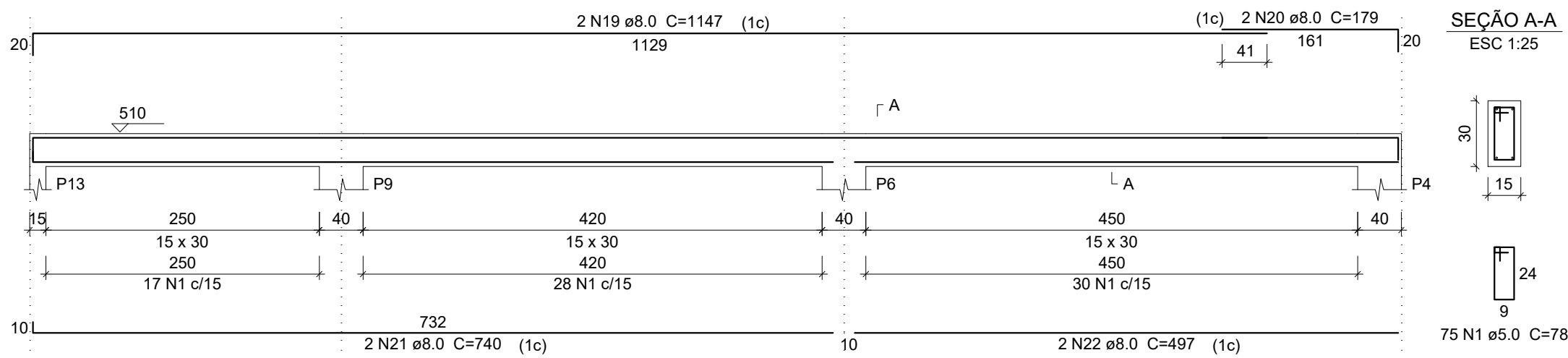
V2
ESC 1:50



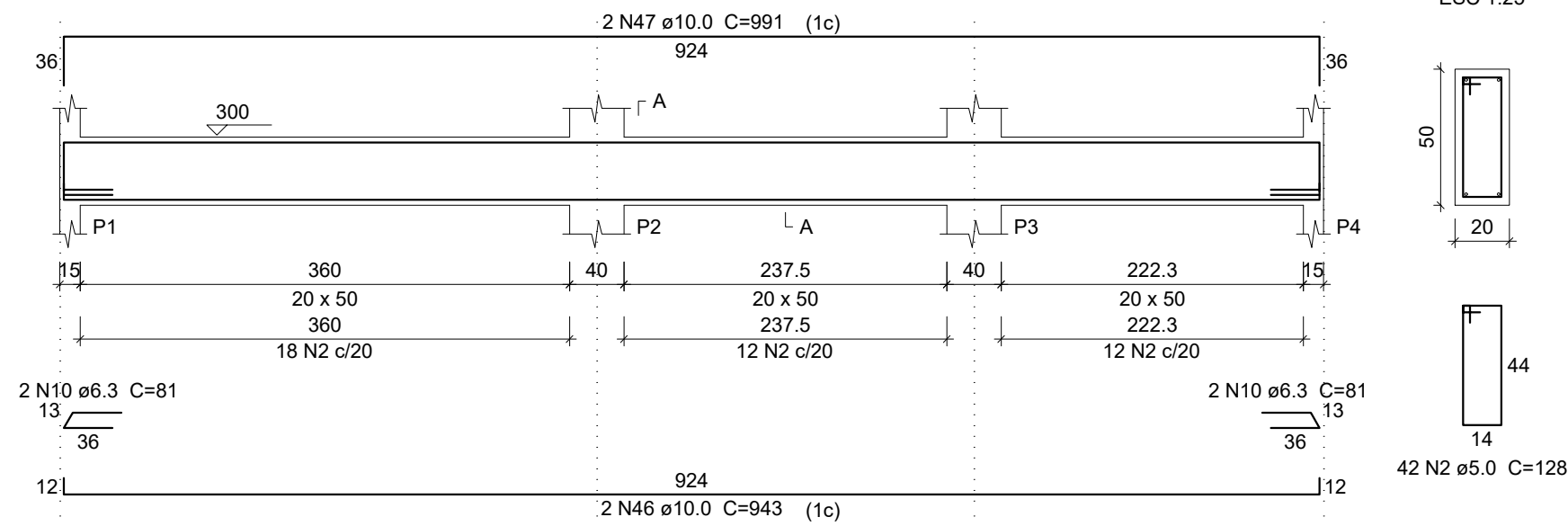
V3
ESC 1:50



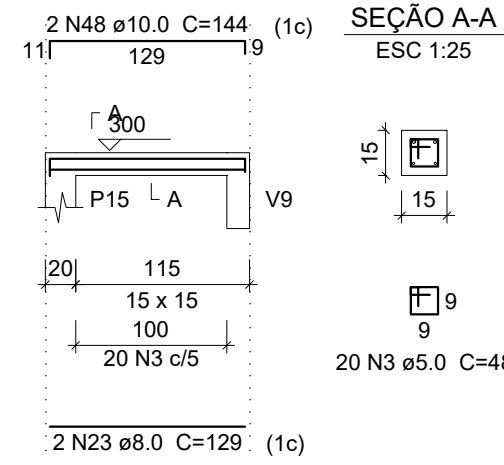
V4
ESC 1:50



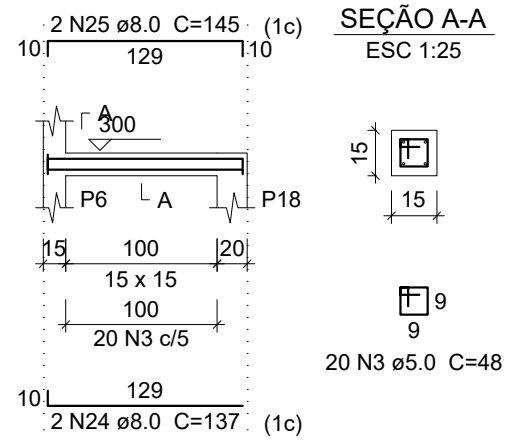
V5
ESC 1:50



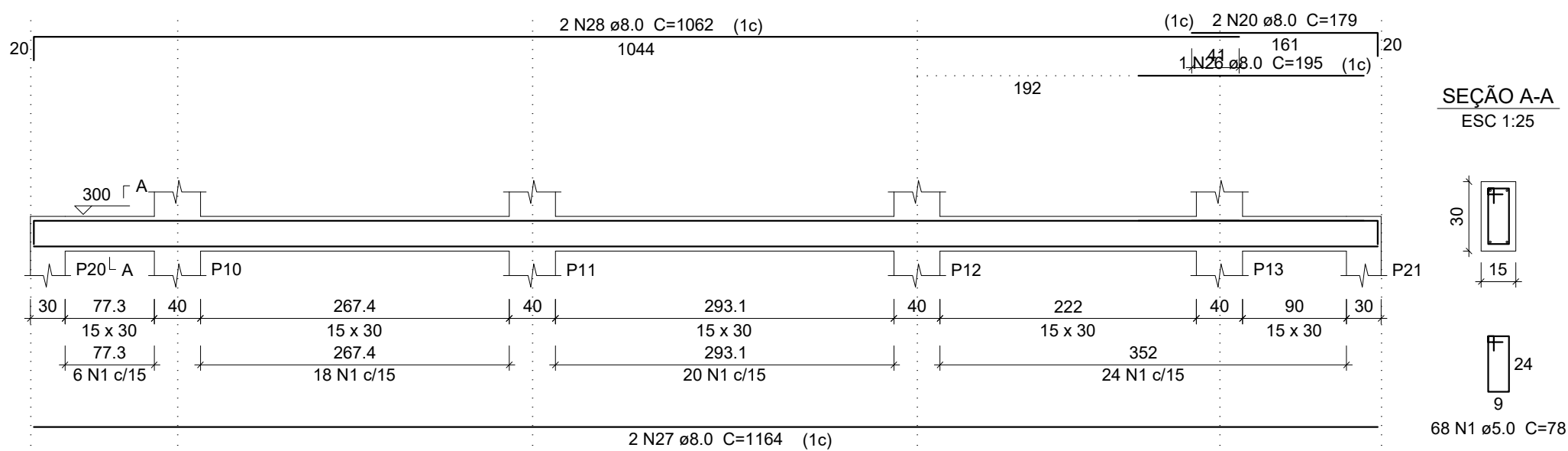
V6
ESC 1:50



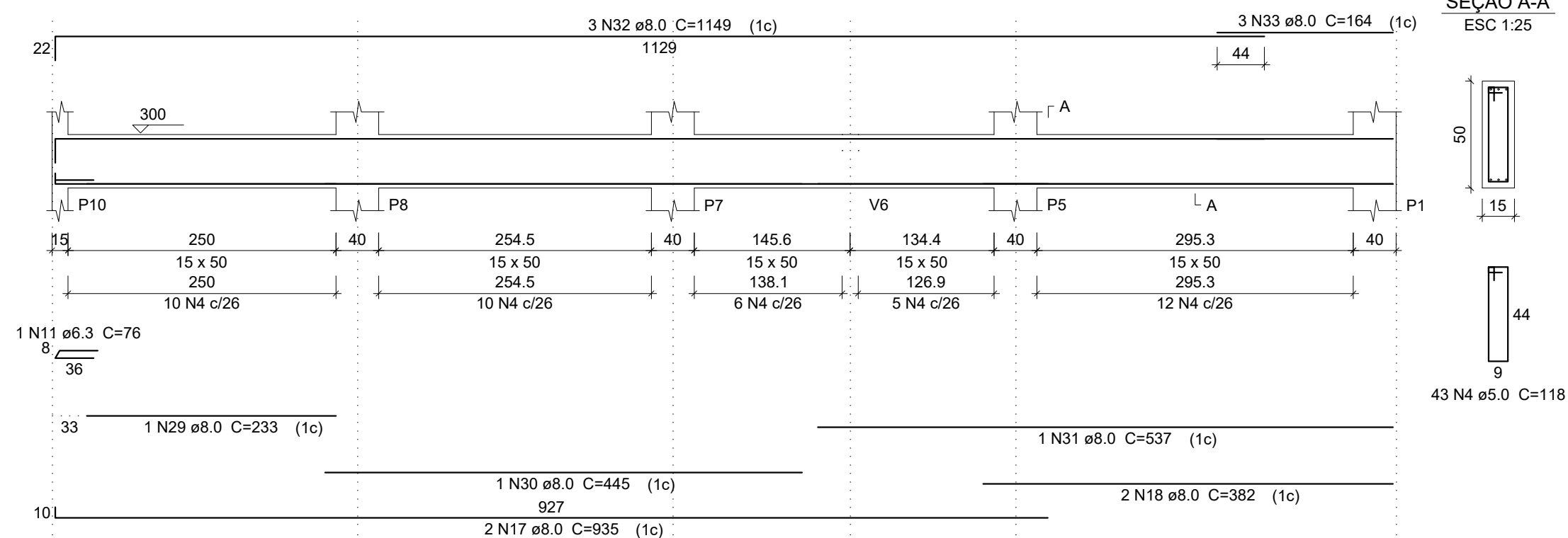
V7
ESC 1:50



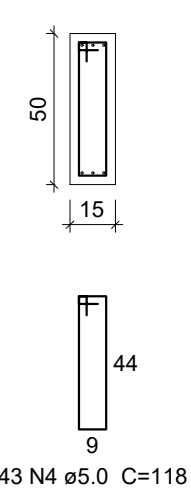
V8
ESC 1:50



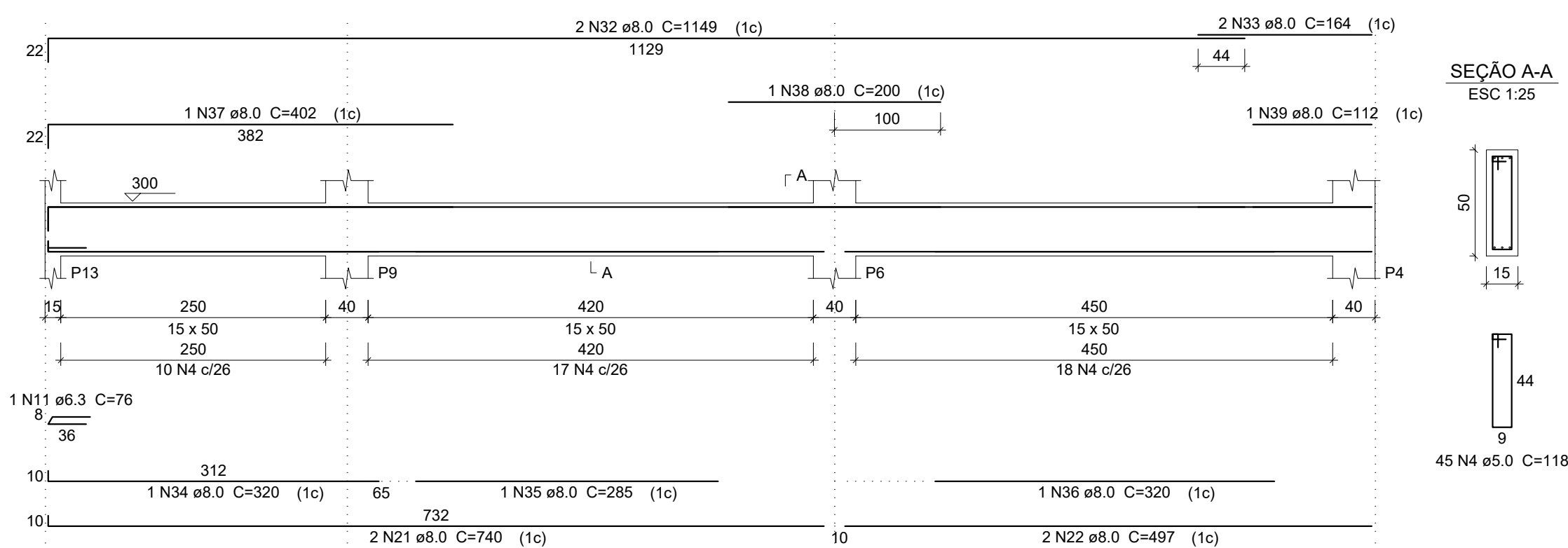
V9
ESC 1:50



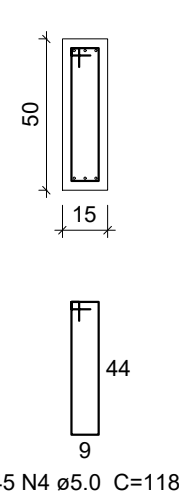
SEÇÃO A-A
ESC 1:25



V10
ESC 1:50



SEÇÃO A-A
ESC 1:25



PREFEITURA:	CAU-TO:
	BOMBEIRO / NATURATINS:

PROPRIETÁRIO: SERVIÇO SOCIAL DO COMÉRCIO - SESC - ADMINISTRAÇÃO REGIONAL NO ESTADO DO TOCANTINS				<div>ESTRUTURAL</div>
END. OBRA: RUA 09, QUADRA A1, AL. 03, 60 - SETOR PARQUE PRIMAVERA, GURUPI - TO.				
PROJETO: REFORMA PARQUE PRIMAVERA- SESC GURUPI				
CONTEÚDO: PROJETO ESTRUTURAL EM CONCRETO ARMADO - SALA MULTIUSO				
ÁREA SALA MULTIUSO: 116,7 m²				
AUTORA DO PROJETO: ENG. TATIELLE SOARES DA SILVA				
ASSINATURAS: <div><div></div><div>SERVIÇO SOCIAL DO COMÉRCIO - SESC ADMINISTRAÇÃO REGIONAL NO ESTADO DO TOCANTINS PROPRIETÁRIO</div><div></div><div>ENG. TATIELLE SOARES DA SILVA - CREA 312390-TO AUTORA DO PROJETO</div></div>				
<div><div><div>TS</div><div>TATIELLE SOARES</div><div>ENGENHEIRA CIVIL</div></div></div>		FOLHA <div>5/7</div>		
PAVIMENTO: TÉRREO	DESENHO: TATIELLE SOARES	ESCALA: INDICADA	DATA: MAIO/2023	